



Bungalow - Semi Detached

151 MAIN ROAD, SHEEPY MAGNA, ATHERSTONE, CV9 3QU

Per Month

£1,400 Per

FEATURES

- Detached Dormer Bungalow
- Sought After Village Location
- Three Bedrooms
- Bathroom and En-Suite
- Off Road Parking
- Garage
- Newly Renovated
- Easy Reach of Good Road Links



HOWKINS & HARRISON

3 Bedroom Bungalow - Semi Detached located in Atherstone

This deceptive detached bungalow has been newly renovated and early viewing is highly recommended. In the sought after village of Sheepy Magna, this lovely property features three good size bedrooms, two on the ground floor and a third on the first floor complete with contemporary en-suite shower room, together with a modern fitted kitchen and family bathroom. The property further benefits from a low maintenance garden, off road parking and garage and is ideally situated for easy reach of Atherstone, Twycross, the A5 and M42. Awaiting EPC. Council Tax D. Minimum annual household income £42,00. Deposit £1615. Holding Deposit £323. Fully managed by Howkins & Harrison. Available end May 2026

Call us on

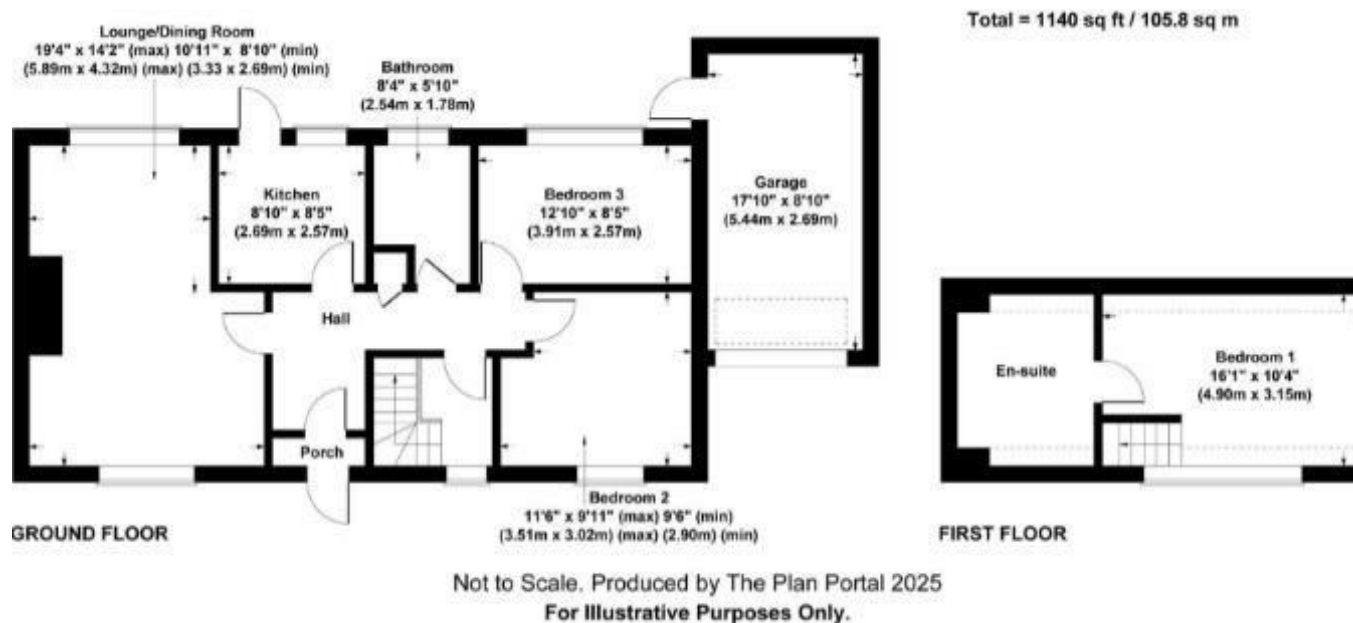
01827 718021

athletts@howkinsandharrison.co.uk

<https://howkinsandharrison.co.uk/>

Council Tax Band

D



Energy Efficiency Rating		Current	Potential
<i>Very energy efficient - lower running costs</i>			
(92 plus)	A		
(81-91)	B		
(69-80)	C		
(55-68)	D		
(39-54)	E		
(21-38)	F		
(1-20)	G		
<i>Not energy efficient - higher running costs</i>			
England & Wales		EU Directive 2002/91/EC	

Agents Note: Whilst every care has been taken to prepare these particulars, they are for guidance purposes only. All measurements are approximate and are for general guidance purposes only and whilst every care has been taken to ensure their accuracy, they should not be relied upon and potential buyers are advised to recheck the measurements.

**HOWKINS &
HARRISON**